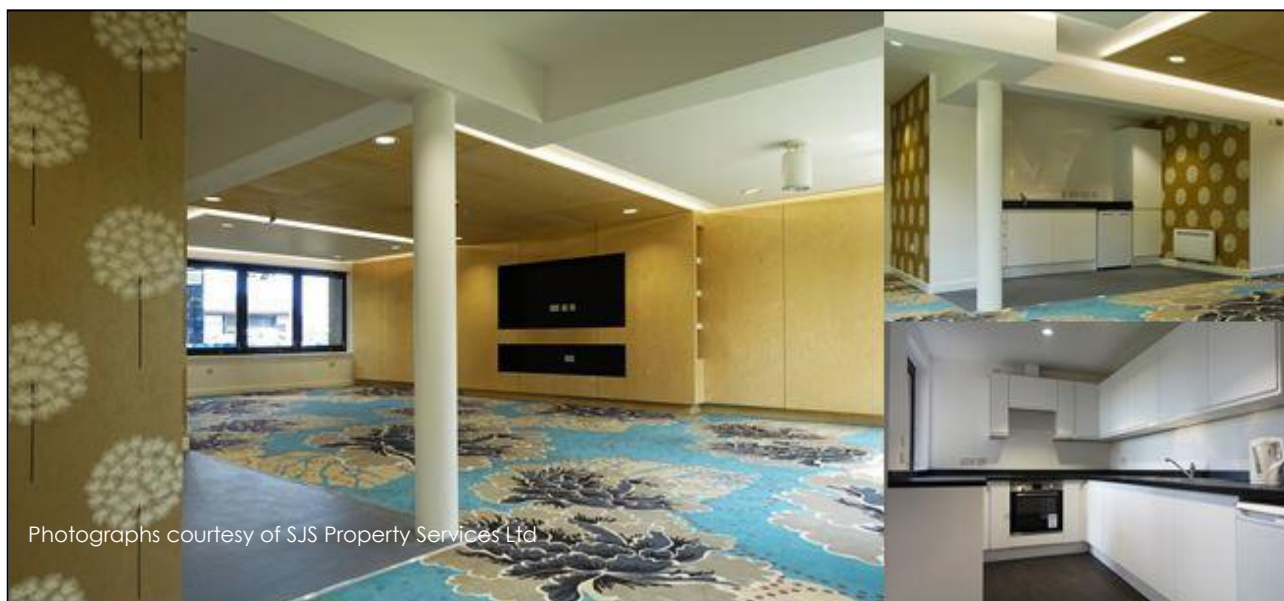




WEST MAINS ROAD HALLS OF RESIDENCE NEW COMMON ROOM



Photographs courtesy of SJS Property Services Ltd

Allan & Hanel were employed to provide Quantity Surveying services for the internal refurbishment and alterations of a Common Room in an existing Hall of Residence property.

The Works involved downtakings, internal partitions, internal doors, accessible toilet, tea bar installations, feature television and storage wall, dropped feature ceilings, internal finishes and electrical rewiring throughout. The adjacent apartment was altered to suit and involved providing a new kitchen, toilets, electrical rewiring and decoration.

Contract Value: £150,000

Client: University of Edinburgh

Consultants: block 9 Architects, Calum Bennett Engineering and Kilbryde Consulting Engineers
