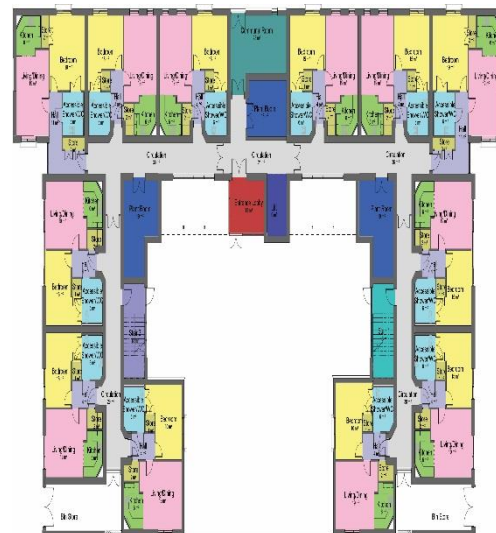




## ERSKINE HOSPITAL SINGLE LIVING ACCOMMODATION



Allan & Hanel are employed to provide Project Management, Quantity Surveying and Principal Designer services for the provision of new build 2 storey single living accommodation for 24 residents.

The new single bedroom accommodation will provide accommodation for ex-servicemen and woman of working age. The social housing project is delivered to meet Silver Standard aspects 1 and 2.

Contract Value: £3,500,000

Client: Erskine Hospital

Consultants: Mast Architects, Struer Consulting Engineers and Hulley and Kirkwood Consulting Engineers